

## VENOUS ULTRASOUND IMAGING COURSE

**April 19th/ November  
18th 2023**

**Birmingham/ Royal Society of  
Medicine, London, UK**

**7 CPD credits**

in accordance with the CPD Scheme of the Royal  
College of Radiologists.



### OVERVIEW

*One day specialist Venous course  
focusing on ultrasound colour duplex  
imaging of the deep and superficial  
venous system.*

Wessex Diagnostic and Canon Medical Systems are working in collaboration to provide a comprehensive combination of lectures, demonstrations and workshop sessions, designed to cover both the investigation protocols and diagnostic criteria of techniques and their application to the surgical procedures of EVLT, RFA and sclerotherapy.

Topics include:

- Basic principles of ultrasound imaging
- Haemodynamics and Doppler ultrasound techniques
- Lower limb deep venous system
- Lower limb superficial venous system
- Upper limb venous system
- Ultrasound imaging in surgical practice.

**PLEASE SEE PROGRAMME  
OVERLEAF**

### FACULTY

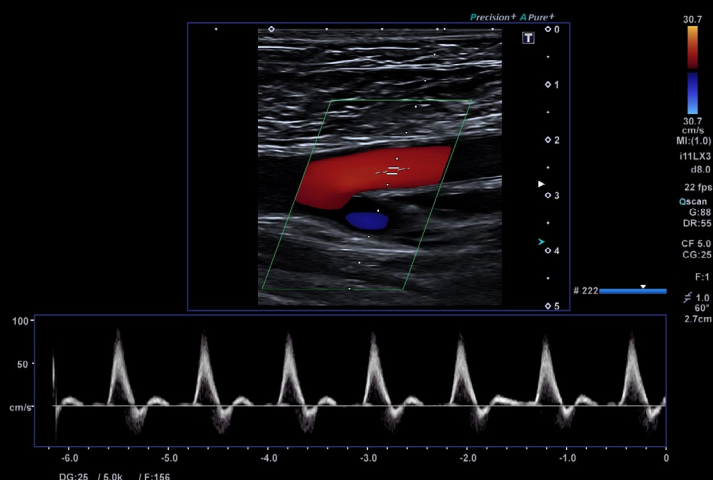
- Dr Colin Deane  
*Kings College London*
- Mr Tim Hartshorne  
*Leicester Royal Infirmary*
- Matthew Bartlett  
*The Royal Free Hospital, London*
- Mr Alok Tiwari  
*Queen Elizabeth Hospital, Birmingham*

### PRACTICAL 'hands-on' WORKSHOPS

An exhibition and workshops of the latest ultrasound systems, will be held throughout.

During the workshops delegates gain supervised training and practical experience in the use of Doppler ultrasound techniques in scheduled sessions within the programme.

## VENOUS ULTRASOUND IMAGING COURSE



### SCIENTIFIC PROGRAMME

---

#### DAY ONE:

##### Morning session:

Basic principles of ultrasound imaging.

Lower Limb Deep venous system

Lower Limb Superficial venous system

#### Practical Workshop I

#### Practical Workshop II

---

##### Afternoon session:

Upper Limb venous system

Ultrasound imaging in surgical procedures

Artefacts and errors

#### Practical Workshop III

#### Practical Workshop IV

### COURSE SCHEDULE:

9am - 4.30pm

### COURSE VENUE

Royal Society of Medicine,  
1 Wimpole Street, London, UK.

### ADVANCE BOOKING REQUIRED.

Reduced accommodation rates available for delegates.

### BOOK NOW FOR EARLY BIRD DISCOUNTS

[www.wessexdiagnostic.com](http://www.wessexdiagnostic.com)  
E: [info@wessexdiagnostic.com](mailto:info@wessexdiagnostic.com)  
T: +44 (0) 7305 845 478